

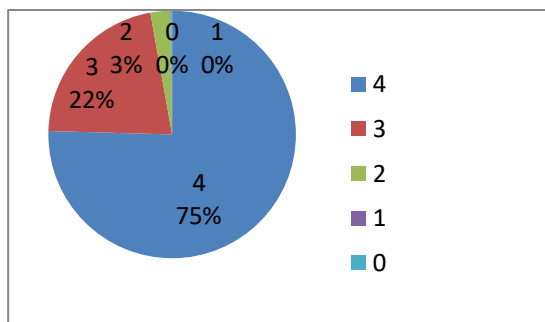
P.R. Government College (A)- Kakinada

Student Satisfactory Survey 2019-20

Feedback Analysis

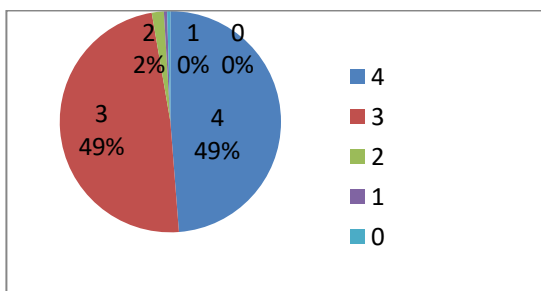
1. How much of the syllabus was covered in the class? 851 responses

4 - 85 to 100%	642
3 - 70 to 84%	185
2 - 55 to 69%	22
1 - 30 to 54%	1
0 - Below 30%	1



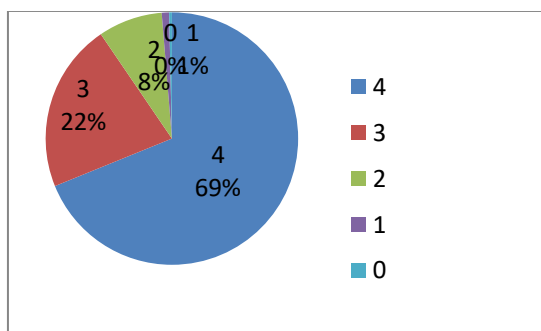
2. How well did the teachers prepare for the classes? 851 responses

4 - Thoroughly	415
3 - Satisfactorily	413
2 - Poorly	15
1 - Indifferently	4
0 - Won't teach at all	4



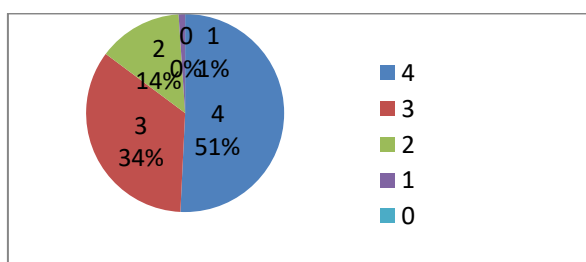
3. How well were the teachers able to communicate? 851 responses

4 - Always effective	586
3 - Sometimes effective	184
2 - Just Satisfactorily	70
1 - Generally ineffective	8
0 - Very poor Communication	3



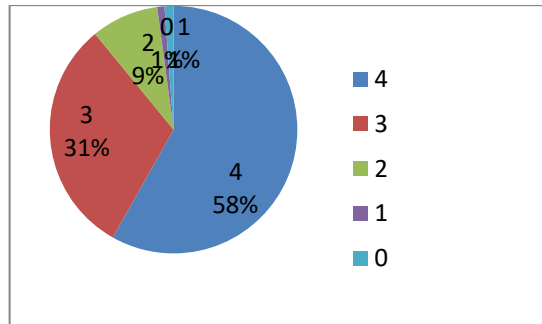
4. The teacher's approach to teaching can best be described as 851 responses

4 - Excellent	432
3 - Very good	293
2 - Good	117
1 - Fair	9
0 - Poor	0



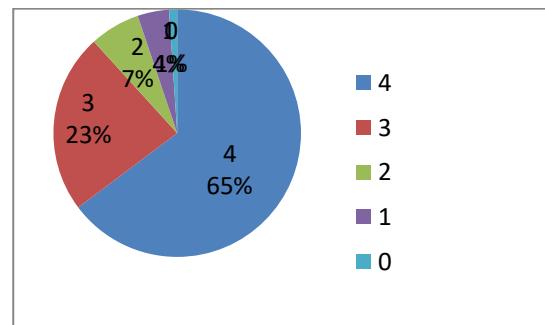
5. Fairness of the internal evaluation process by the teachers.851 responses

4 - Always fair	495
3 - Usually fair	263
2 - Sometimes unfair	75
1 - Usually unfair	8
0 - Unfair	10



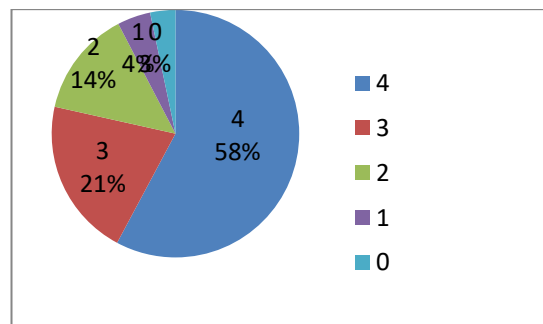
6. Was your performance in assignments discussed with you?851 responses

4 - Every time	551
3 - Usually	200
2 - Occasionally/Sometimes	56
1 - Rarely	35
0 - Never	9



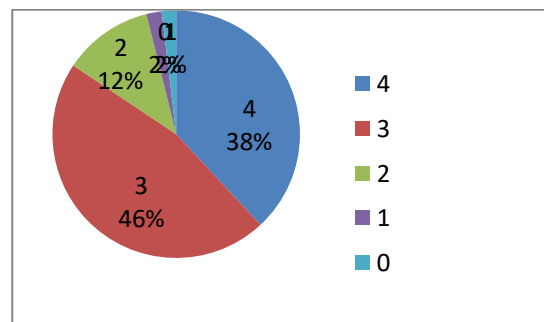
7. The institute takes active interest in promoting internship, student exchange, field visit opportunities for students.851 responses

4 - Regularly	492
3 - Often	176
2 - Sometimes	118
1 - Rarely	37
0 - Never	28



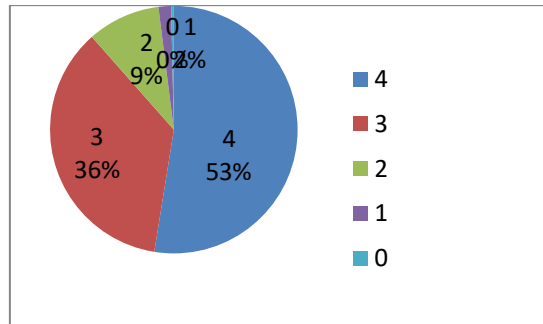
8. The teaching and mentoring process in your institution facilitates you in cognitive, social and emotional growth851 responses

4 - Significantly	324
3 - Very well	394
2 - Moderately	100
1 - Marginally	17
0 - Not at all	16



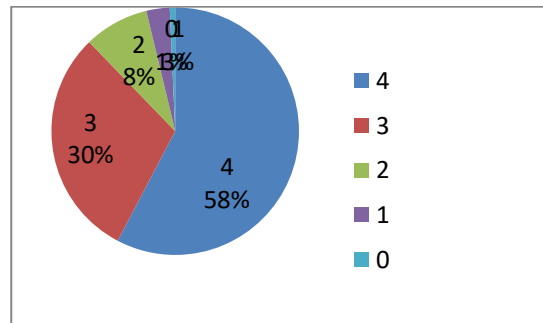
9. The institution provides multiple opportunities to learn and grow.851 responses

4 - Strongly agree	447
3 - Agree	306
2 - Neutral	81
1 - Disagree	14
0 - Strongly disagree	3



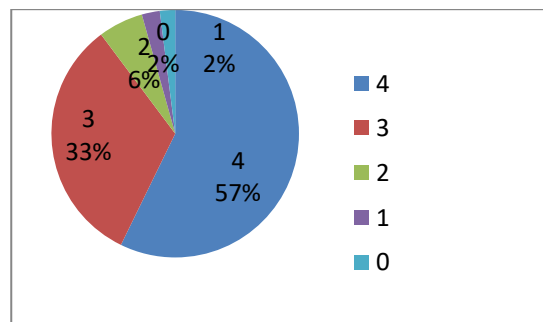
10. Teachers inform you about your expected competencies, course outcomes and programme outcomes.851 responses

4 - Every time	491
3 - Usually	256
2 - Occasionally/Sometimes	72
1 - Rarely	26
0 - Never	6



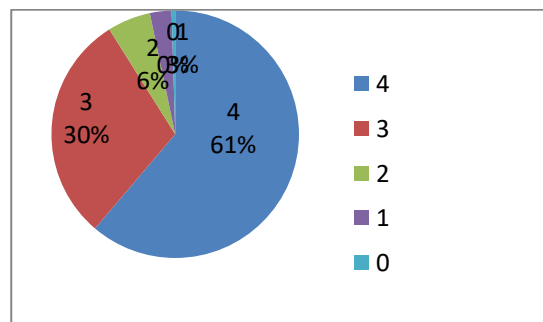
11. Your mentor does a necessary follow-up with an assigned task to you.851 responses

4 - Every time	487
3 - Usually	277
2 - Occasionally/Sometimes	50
1 - Rarely	20
0 - I don't have a mentor	17



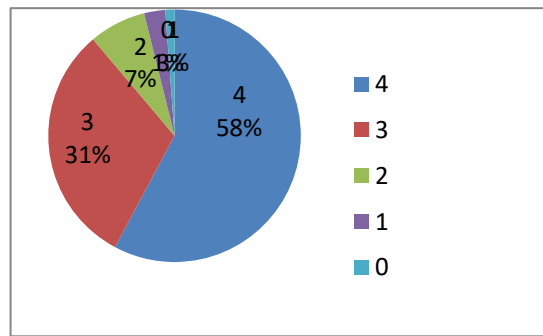
12. The teachers illustrate the concepts through examples and applications.851 responses

4 - Every time	521
3 - Usually	254
2 - Occasionally/Sometimes	48
1 - Rarely	24
0 - Never	4



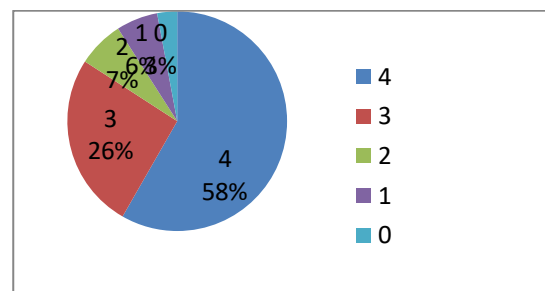
13. The teachers identify your strengths and encourage you with providing right level of challenges.851 responses

4 – Fully	492
3 – Reasonably	264
2 – Partially	62
1 – Slightly	23
0 - Unable to	10



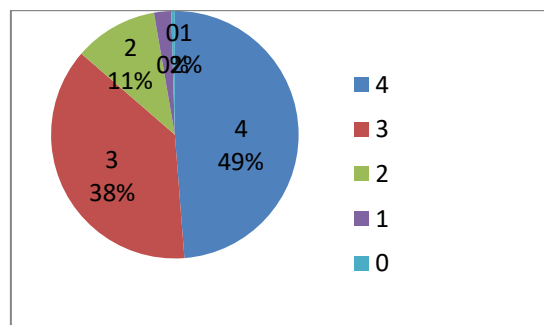
14. Teachers are able to identify your weaknesses and help you to overcome them851 responses

4 - Every time	496
3 – Usually	220
2 - Occasionally/Sometimes	58
1 – Rarely	52
0 – Never	25



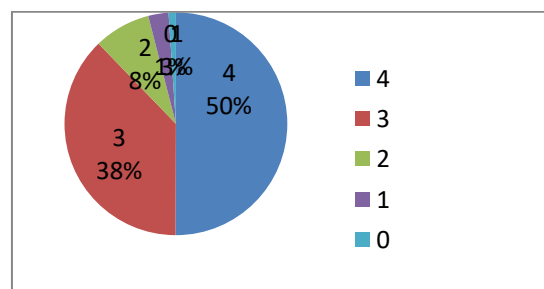
15.The institution makes effort to engage students in the monitoring, review and continuous quality improvement of the teaching learning process.851 responses

4 - Strongly agree	415
3 – Agree	320
2 – Neutral	93
1 – Disagree	19
0 - Strongly disagree	4



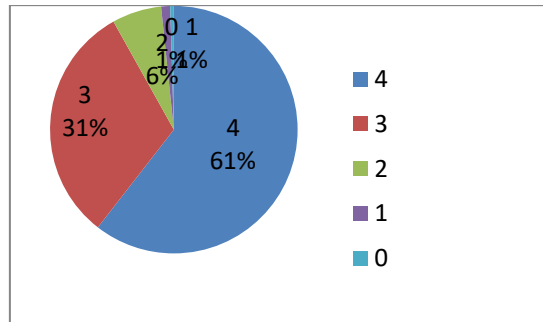
16. The institute/teachers use student centric methods, such as experimental learning, participative learning and problem solving methodologies for enhancing learning experiences.851 responses

4 - To a great extent	426
3 - Moderate	321
2 - Some what	70
1 - Very little	25
0 - Not at all	9



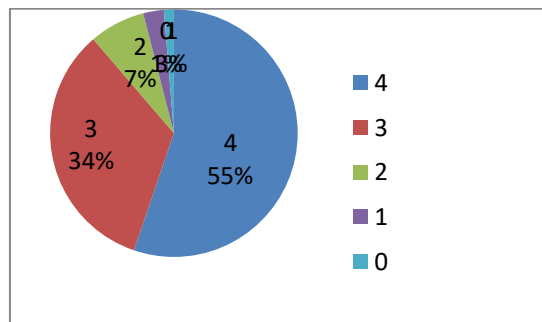
17. Teachers encourage you to participate in extracurricular activities.851 responses

4 - Strongly agree	515
3 – Agree	267
2 – Neutral	55
1 - Disagree	10
0 - Strongly disagree	4



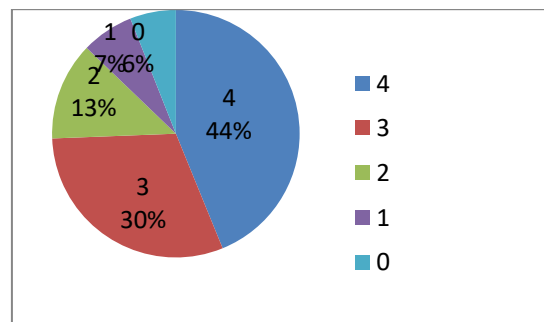
18. Efforts are made by the institute/teachers to inculcate soft skills, life skills and employ-ability skills to make you ready for the world of work .851 responses

4 - To a great extent	470
3 - Moderate	285
2 - Some what	62
1 - Very little	23
0 - Not at all	11



19. What percentage of teachers use ICT tools such as LCD projector, Multimedia etc... while teaching.851 responses

4 - Above 90%	373
3 - 70 to 89%	260
2 - 50 to 69%	109
1 - 30 to 49%	58
0 - Below 29%	51



20. The overall quality of teaching-learning process in your institute is very good.851 responses

4 - Strongly agree	435
3 - Agree	332
2 - Neutral	68
1 - Disagree	12
0 - Strongly disagree	4

